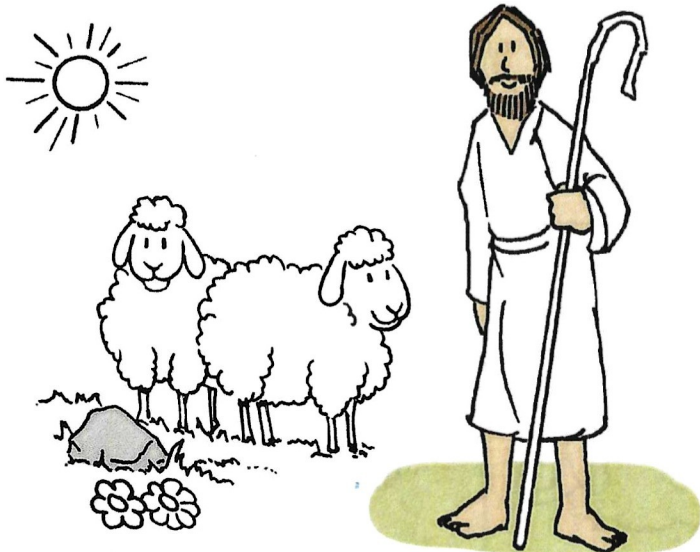
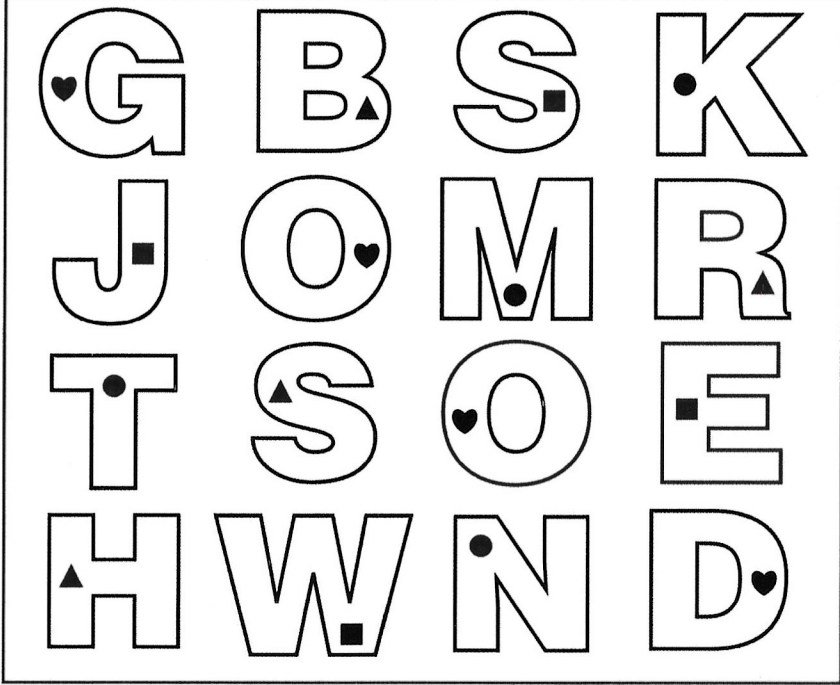


What kind of Shepherd is Jesus?

Shade in the letters that have a ♥.



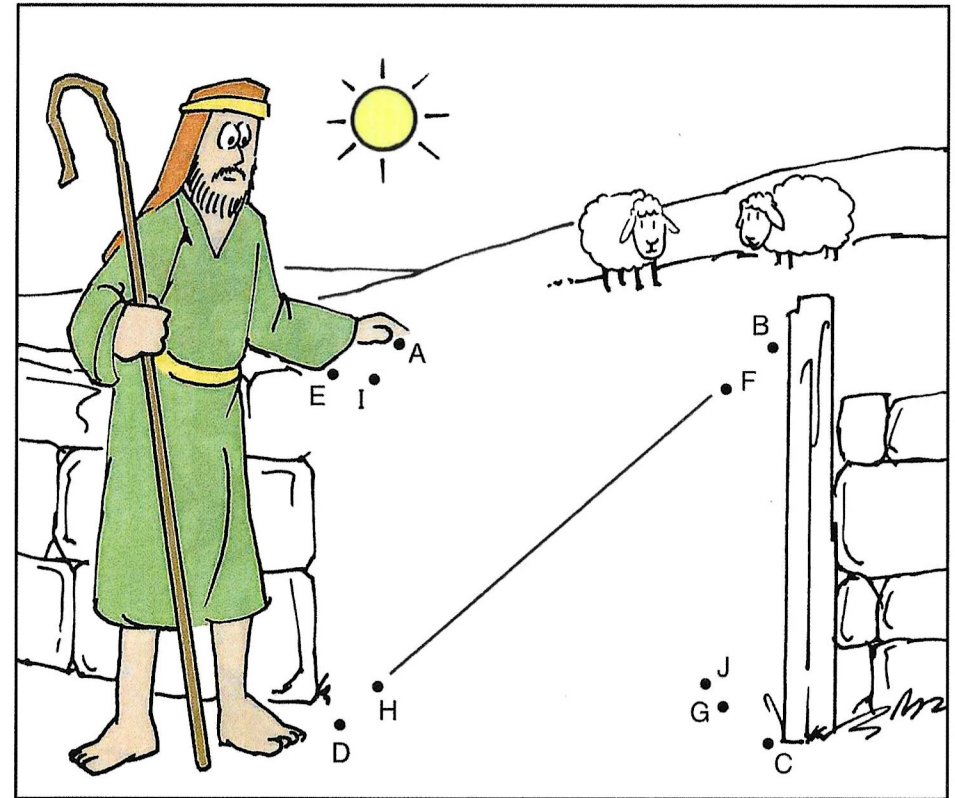
Ages 3+

April 26, 2026 • John 10:1-10

The Good Shepherd

The shepherd enters by the gate.

Connect the dots: A B C D E F G H I J



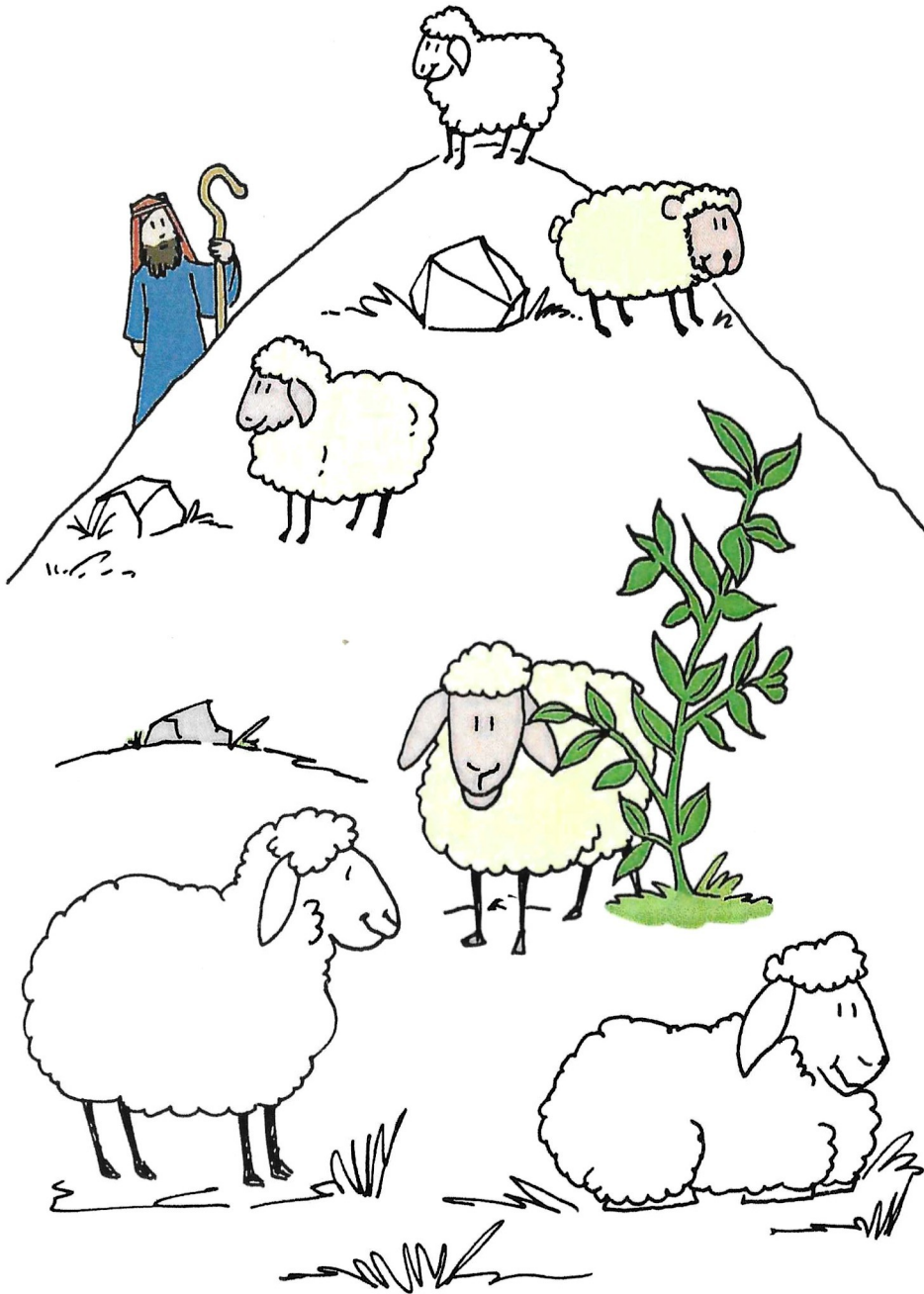
St. John Cumberland Presbyterian Church
6007 W. Pleasant Ridge Road
Arlington, TX 76016
(817) 478-6219

Web - www.stjohncpc.org
E-mail stjohncpc@att.net

Enter your **SECRET CODE** to unlock games @ games.childrensbulletins.com **SECRET CODE**
KH5KZ7

The sheep listen to the shepherd.

Count how many sheep. 6 or 7 ?



The shepherd knows each sheep by name.

Circle the matching sheep in each row.

